

Violoncello

Charlie Barber



for chamber orchestra

© Charlie Barber

Instrumentation:

2 Flutes
 2 Oboes
 2 Clarinets in Bb / A
 2 Bassoons

2 Horns in F
 2 Trumpets in B flat

Timpani

Percussion: Glockenspiel, Tam-tam, Orchestral Bass Drum, Snare Drum

Violin 1
 Violin 2
 Viola
 Violoncello
 Contrabass

Strings: 'Divisi' indicates conventional outside-inside division

Score in C

Duration:

c. 18 minutes

Programme note:

Cinema italiano for chamber orchestra is a tribute to the great tradition of Italian cinema from the end of the Second World War to the 1980s.

The suite brings together music by Nino Rota, Renzo Rossellini, Manuel De Sica and Ennio Morricone, written for films by some of Italy's most celebrated directors: Luchino Visconti, Federico Fellini, Roberto Rossellini, Vittorio De Sica and Giuseppe Tornatore.

The selection reflects a personal response to films that have left a profound impression both on the compiler and on the history of world cinema. Together, these works capture the lyricism, humanity and emotional depth that define Italian film at its most enduring.

The films featured in the suite are:

Rocco e i suoi fratelli (Rocco and His Brothers) Luchino Visconti, 1960; music: Nino Rota

Roma città aperta (Rome, Open City) Roberto Rossellini, 1945; music: Renzo Rossellini

Il giardino dei Finzi Contini (The Garden of the Finzi-Continis) Vittorio De Sica, 1970; music: Manuel De Sica

La Dolce Vita Federico Fellini, 1960; music: Nino Rota

Cinema Paradiso Giuseppe Tornatore, 1988; music: Ennio Morricone

Charlie Barber

May 2026

Cinema italiano

1. Rocco e i suoi Fratelli (Rocco and His Brothers)

dir. Luchino Visconti, 1960

i. Main titles

A Pesante, drammatico
♩ = 84

Nino Rota
(arr. Charlie Barber)

Musical score for the main titles of the film. The score is in bass clef, 2/4 time, and D major. It consists of three staves of music. The first staff begins with a *ff* dynamic and a crescendo, followed by a *p* dynamic and a *ff* marcato triplet. The second staff starts at measure 10 with a *f* dynamic and a crescendo, followed by a *ff* marcato triplet. The third staff starts at measure 20 with a *f* dynamic and a crescendo, followed by a *ff* dynamic and a *p* dynamic. The score ends with a key signature change to E major (indicated by a sharp on the F line).

ii. Terra Lontana

D Tempo di valse ♩ = 58
pizz.

Musical score for the piece 'Terra Lontana'. The score is in bass clef, 3/4 time, and D major. It consists of four staves of music. The first staff begins at measure 31 with a *p* dynamic. The second staff starts at measure 39 with a *mp* dynamic and a *p* dynamic. The third staff starts at measure 47 with a *p* dynamic. The fourth staff starts at measure 55 with a *p* dynamic. The score ends at measure 61 with a key signature change to E major (indicated by a sharp on the F line) and a final measure with a *9* measure rest.

73 arco *mf*

79 **G** *mf* *f* *mf* *f* *mf*

90 **H** *f* *mf* *sim.*

98 *p* *mf*

106 **I** *mp*

115 *mp*

123 **J** *poco Rall...* *3*

Violoncello
Charlie Barber - Cinema italiano

5

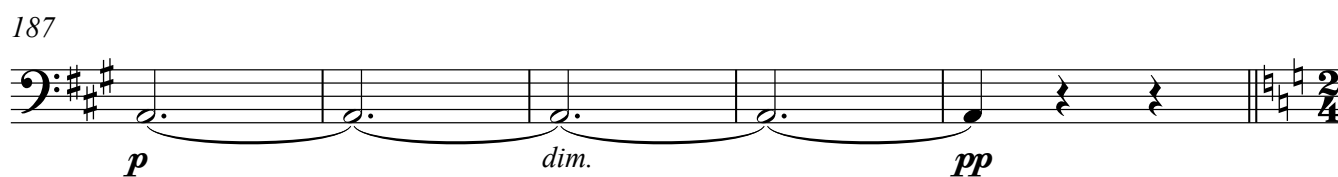
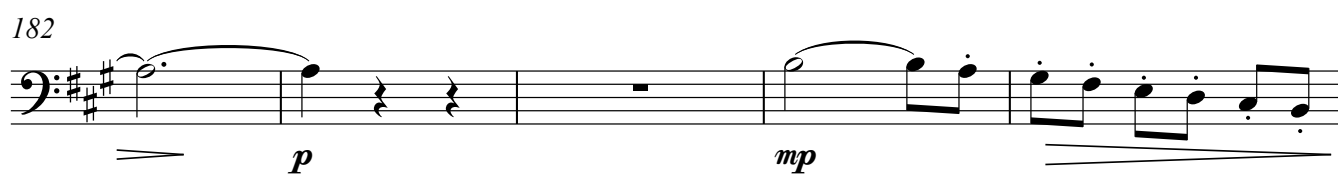
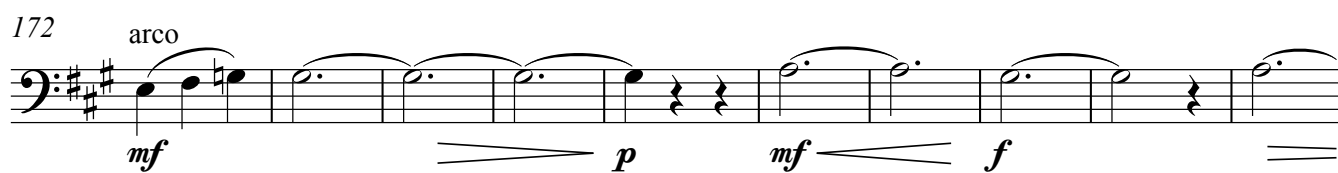
129 **K** a tempo
pizz.
mf

137

145 **L**
f

153

159 **M** 10



iii. Nadia

N Andante, con espressivo

192 ♩ = 76



Violoncello
Charlie Barber - Cinema italiano

7

208 **P**

pp

216 **Q** **R** unis. *p*

p

225 **S**

3 3

T Vcl solo *tristissimo*
234 *p* *pp* Tutti

p

Tutti **U**
244 *f* con slancio *pp*

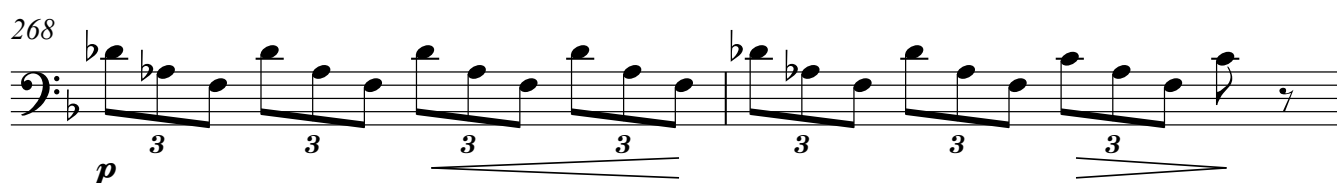
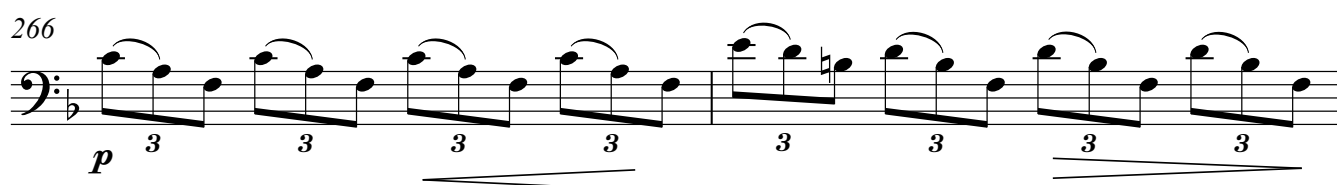
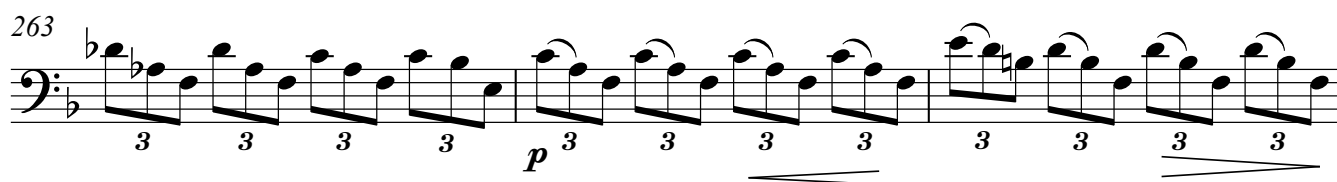
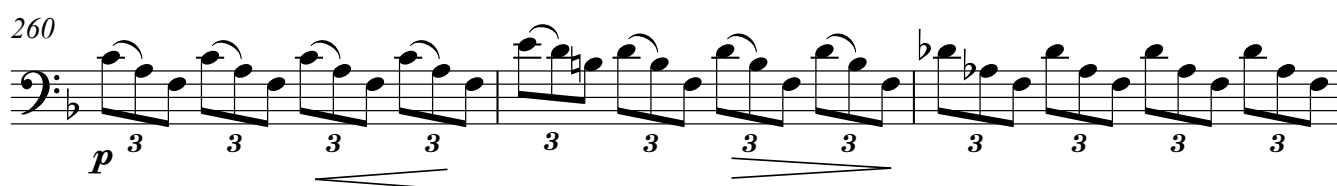
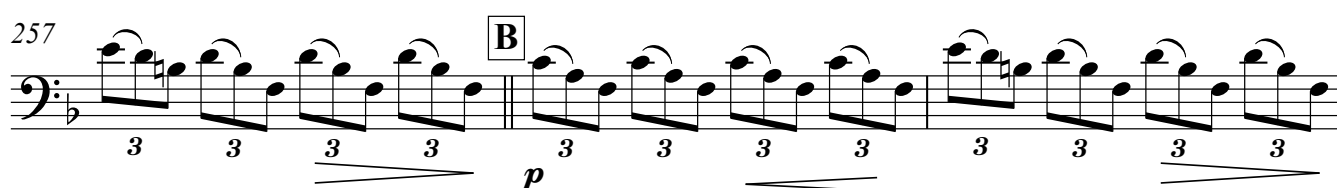
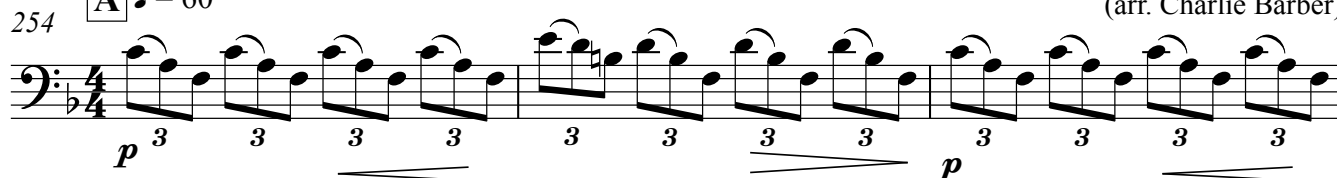
f con slancio

2. Roma città aperta (Rome Open City)

dir. Roberto Rossellini, 1946

Andante

A ♩ = 60

Renzo Rossellini
(arr. Charlie Barber)

Charlie Barber - Cinema italiano

270 pizz.

p 3 3 3 3 3 3 3 3

272

3 3 3 3 3 3 3 arco

C Misterioso
Più mosso ♩ = 66

276

mf

281

cresc.

285 **D** ben marc.

f 3 *pp* < *f* 3

290

f 3 *ff* *ppp* a niente

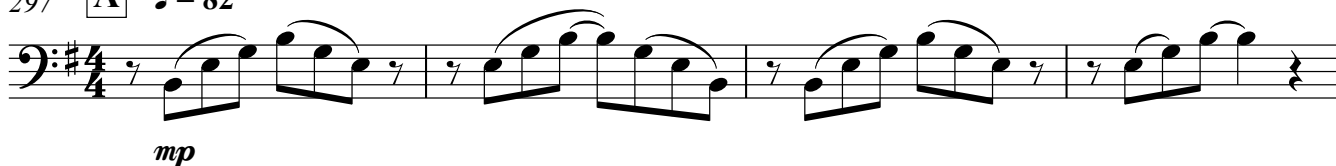
3. Il Giardino dei Finzi Contini (The Garden of the Finzi-Contini)

dir. Vittorio De Sica, 1970

Moderato poco rubato

Manuel De Sica
(arr. Charlie Barber)

297 **A** ♩ = 82



301



305 **B**



310



316



321 **C**



325



Charlie Barber - Cinema italiano

330 **D** a tempo

pp

334

mp *dim.*

339 **E**

pp *mp*

344

348 **F**

pp

351

Rit.

ppp

4. La dolce vita

dir. Federico Fellini, 1960

i. Main titles

A Brillante, Allegro non troppo

$\text{♩} = 116$

Nino Rota
(arr. Charlie Barber)

355

f *ff*

360 **B**

3 2

367 C pizz. *ff* *p*

374 *mf*

382

389 arco *ff*

396 D **Festoso** *f* *ff*

404 E *ff* *pp*

414

ii. La dolce vita (main theme)

Moderato, rubato

422 ♩ - 96 F *pp*

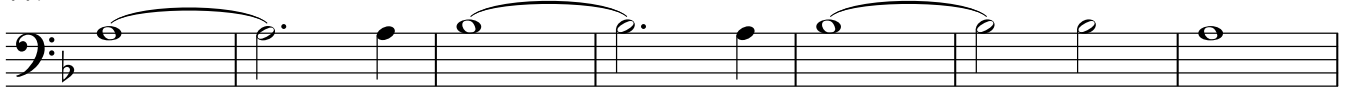
431 Più mosso ♩ - 110



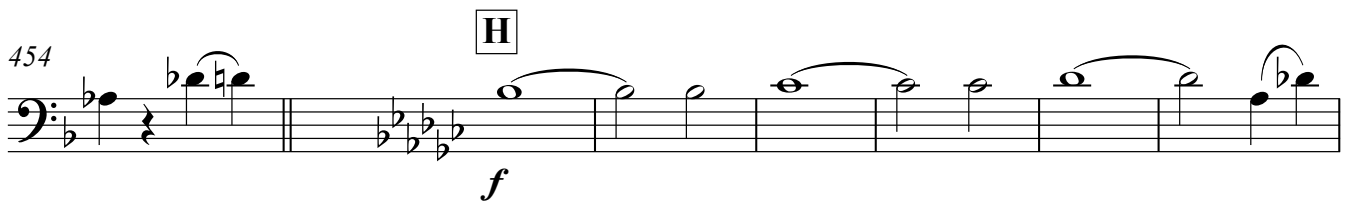
439 **G**



447



454



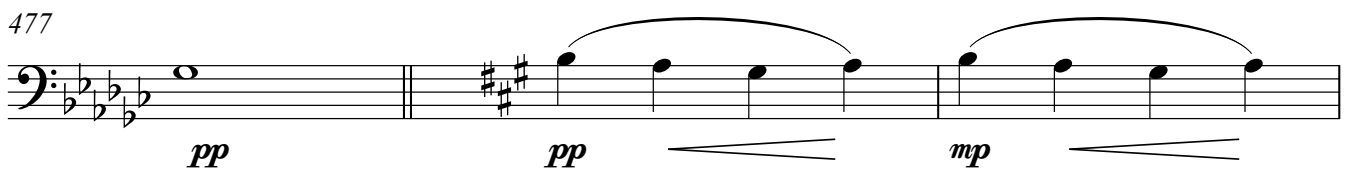
461



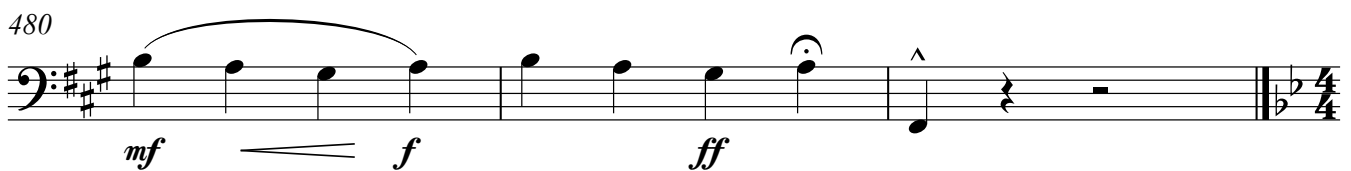
469



477



480



5. Cinema Paradiso

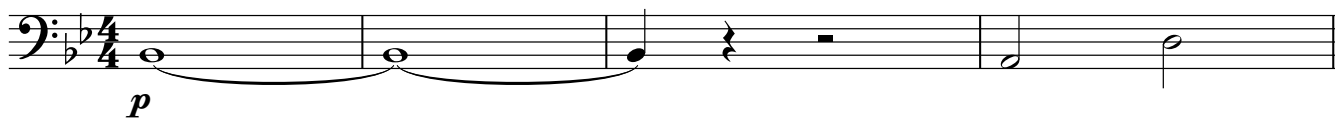
dir. Giuseppe Tornatore, 1988

Andante, tranquillo

A ♩ = 60

Ennio Morricone
(arr. Charlie Barber)

483



487

B



494

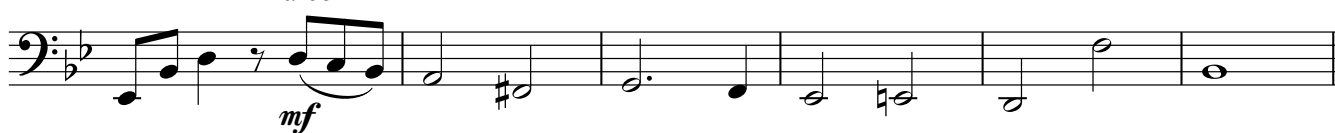
C

pizz.



500

arco



D

con slancio

détaché, full bows

506



510



513



Charlie Barber - Cinema italiano

515 **E** pizz. arco
f

520
f

523
cresc. *ff*

525 **F** **Meno mosso** ♩ = 56 pizz.
pp

529 arco
mf

534 **G** pizz. arco
f *f*

539

542
ff